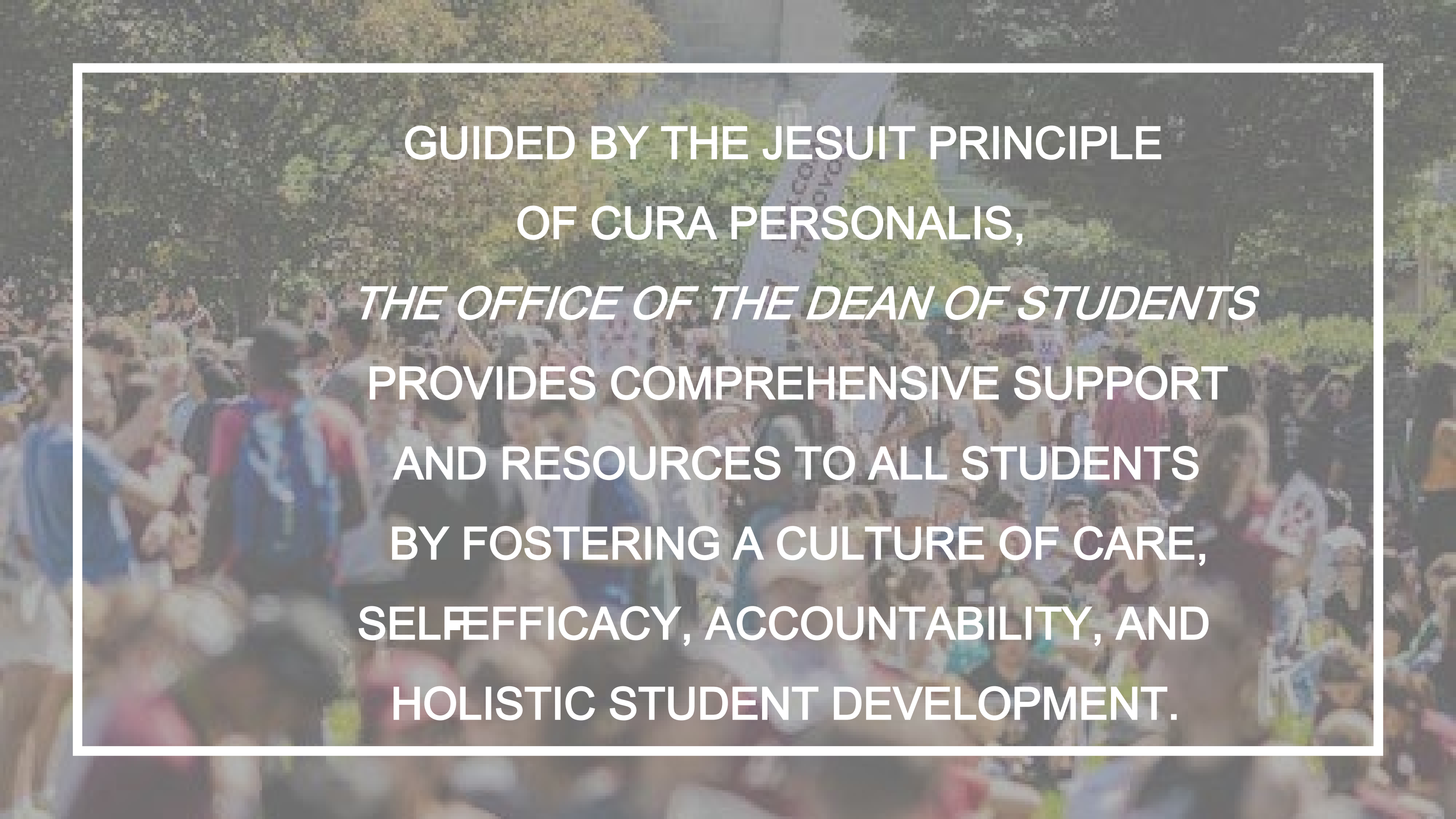


THE CURAN NETWORK

Caring for Students in Need



Office of the Dean of Students - SOS

A large crowd of people is gathered outdoors, possibly at a festival or event. The background is slightly blurred, showing many people in various colors of clothing. A white text box is overlaid in the center of the image, containing the following text:

GUIDED BY THE JESUIT PRINCIPLE
OF CURA PERSONALIS,
THE OFFICE OF THE DEAN OF STUDENTS
PROVIDES COMPREHENSIVE SUPPORT
AND RESOURCES TO ALL STUDENTS
BY FOSTERING A CULTURE OF CARE,
SELFEFFICACY, ACCOUNTABILITY, AND
HOLISTIC STUDENT DEVELOPMENT.



Office of the Dean of Students

Together, we address the personal, academic, and behavioral challenges that may impact student success.

SOS Student Outreach & Support

Crisis intervention, case management, basic needs, holistic support (BCT/CARE)

SRCS Student Rights, Responsibilities & Conflict Resolution

Conduct, conflict resolution, restorative practices (Community Standards/Student Promise)



One referral can make a
difference.
Support Starts Here

In the spirit of cura personalis —a hallmark of Ignatian spirituality that calls us to care for the whole person —the CURA Network is a university -wide system for identifying, referring, and responding to student concerns.

Led by the Office of the Dean of Students (ODOS), the CURA Network allows faculty, staff, and others to report academic, emotional, or personal concerns. Our team then connects students to the right support through case management, advocacy, and campus or community resources.

Our team works to connect students with the care they need, when they need it —so no student faces challenges alone.

BEHAVIORAL CONCERNS: BCT

Refer students whose behavior presents a possible threat to safety or well-being of oneself or others (e.g., suicide ideation, self-harm, violence or threats against others).

OFFICE OF THE DEAN OF STUDENTS - SOS

HARASSMENT & SEXUAL MISCONDUCT CONCERNS

Report alleged or suspected discrimination, sexual misconduct, or equity-based retaliation by or against any student or employee. Examples include reports of sexual assault, stalking, dating/domestic violence, and harassment/misconduct of any kind motivated by an individual's membership in a protected class.

*OFFICE FOR EQUITY & COMPLIANCE (OEC)
OFFICE OF THE DEAN OF STUDENTS*

ACADEMIC CONCERNS

Report concerns about academic performance, class attendance, or general academic engagement

*STUDENT ACADEMIC SERVICES
and COLLEGES/SCHOOLS*

PERSONAL CONCERNS: CARE

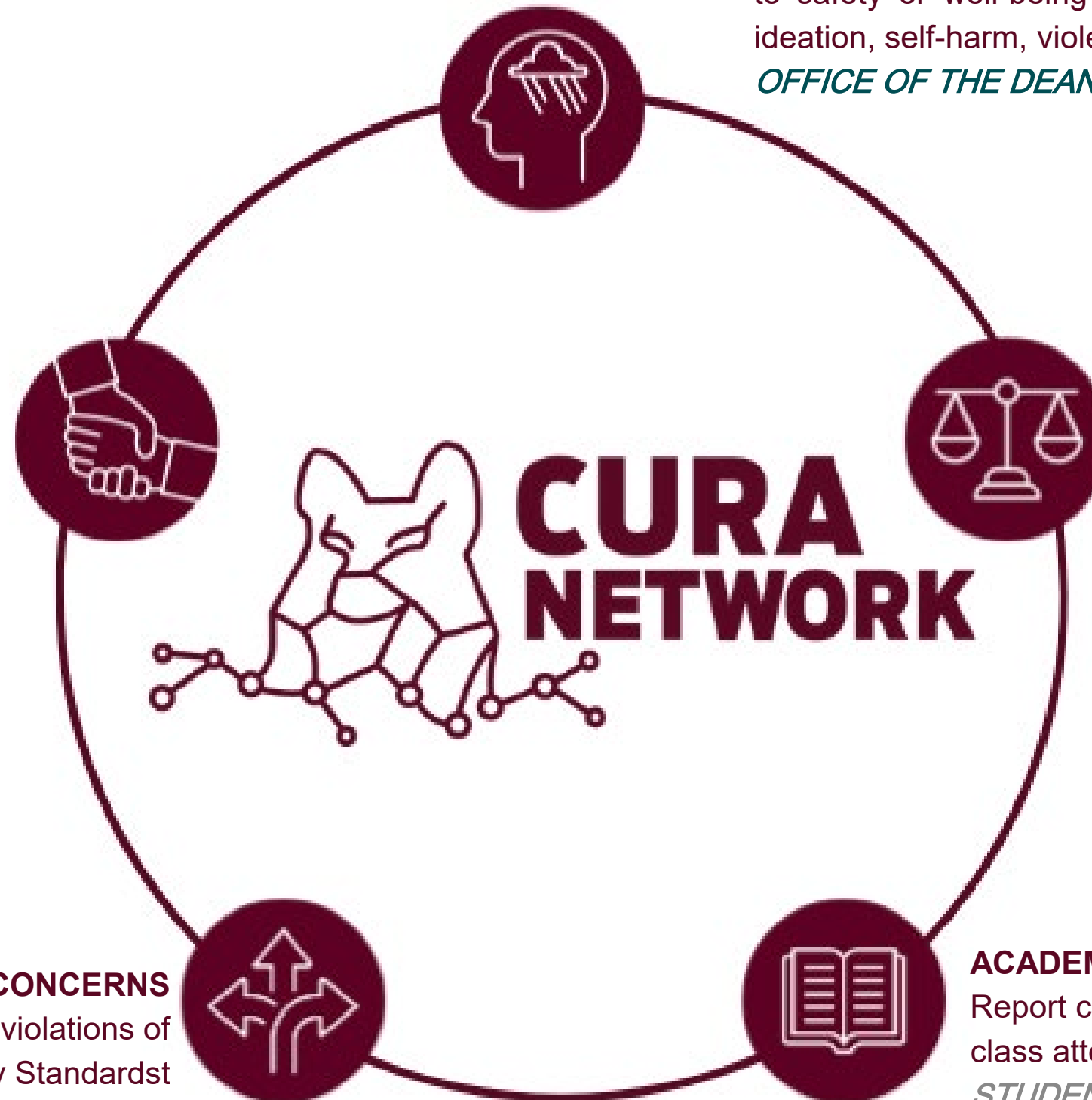
Refer students who may need general assistance overcoming serious or complex personal difficulties or getting connected to resources. Examples include: students struggling with general mental health concerns or food/ housing insecurity, or managing a unique personal financial emergency.

OFFICE OF THE DEAN OF STUDENTS - SOS

STUDENT CONDUCT & CONFLICT CONCERNS

Report student conflict(s) and/or alleged violations of Loyola's Community Standardst

OFFICE OF THE DEAN OF STUDENTS - SRCR





Supports students experiencing serious or complex personal difficulties

Provides individualized case management and personalized support

Connects students with campus and community resources

Offers ongoing followup, planning, and advocacy

Helps students navigate university systems during life disruptions

COMMON CARE REFERRAL ISSUES

Academic Concerns	Mental Health Concerns
Medical Concerns	Economic Concerns
Food Insecurity	Housing Insecurity
Family Issues	Grief or Loss
Social/Emotional Adjustment	Victim/Witness to a Crime



FOOD

Free food pantries on all 3 campuses for enrolled students.



HOUSING

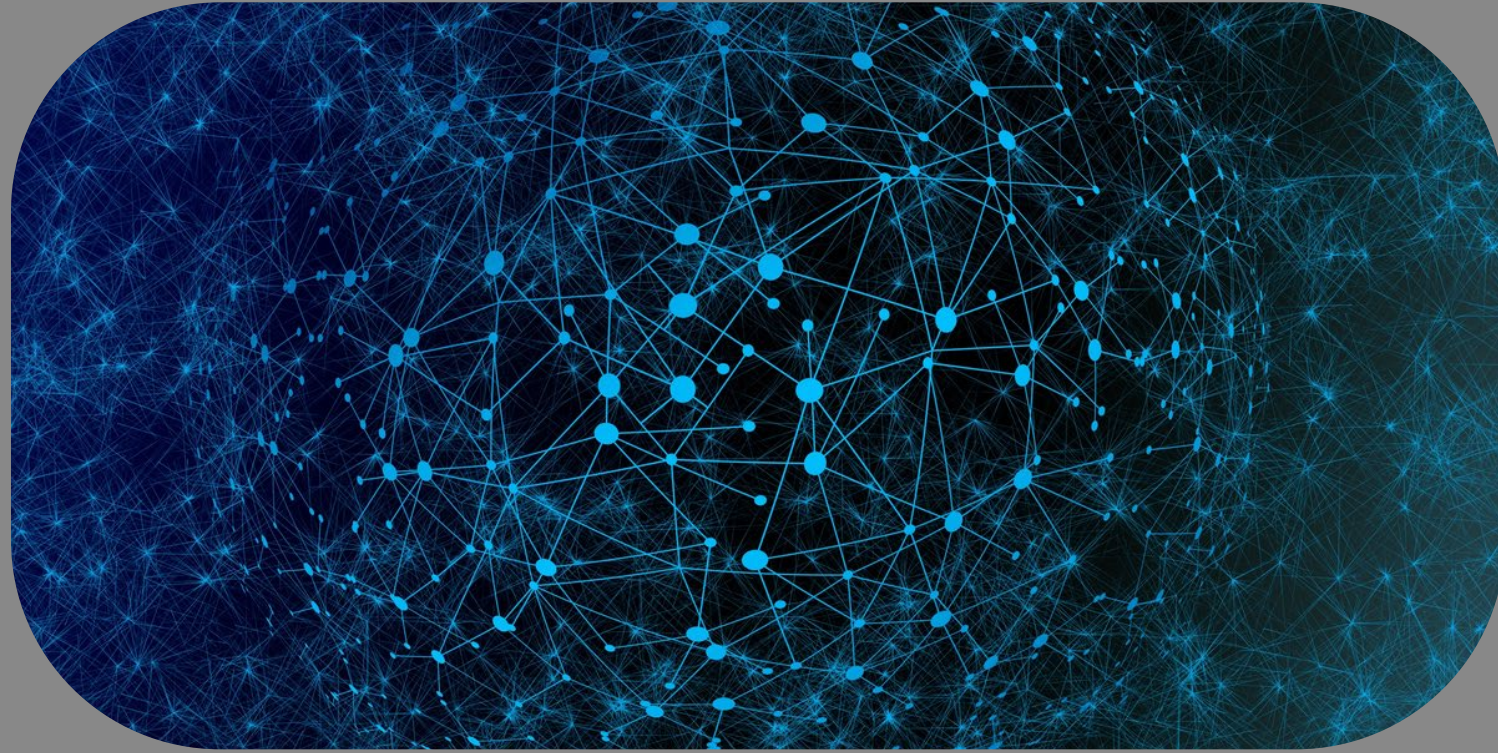
Short-term emergency housing assistance via Dean on Call.



EMERGENCIES

One-time financial support through the CARE Fund

Basic Needs Support



Behavioral Concerns Team (BCT)

A multi -disciplinary committee that serves as the centralized and coordinated body for discussion and action regarding students exhibiting behaviors that may:

- a) present a danger to oneself or others
- b) cause a disturbance in the community, and/or
- c) indicate some form of distress



CONNECT WITH DOS



Main Office

Damen Student Center,
Suite 300

Email

deanofstudents@luc.edu

Telephone

773.508.8840

QR Code



Thank You!

